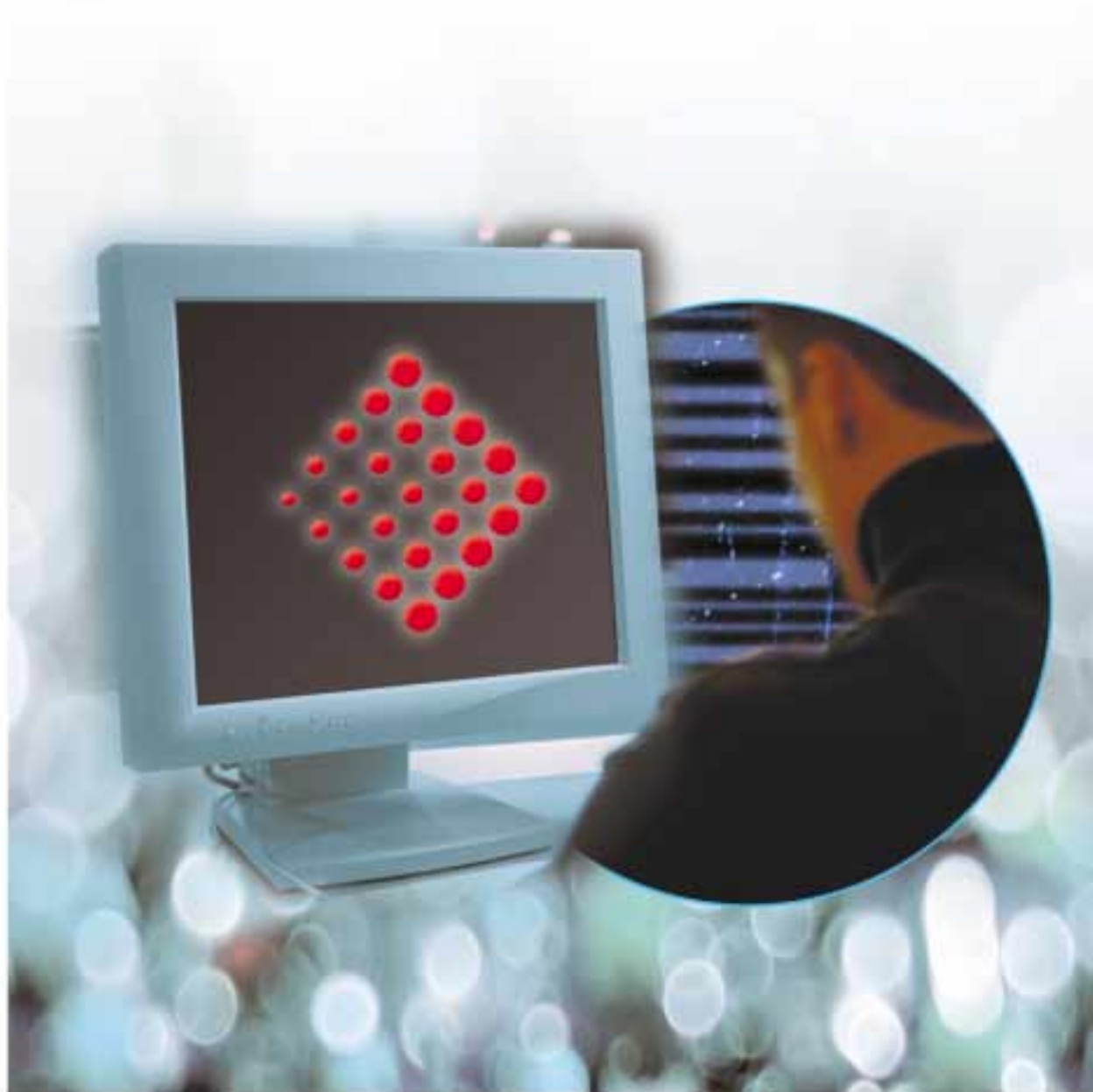


SMART TOOLS™

e P r o d u c t S o l u t i o n s



BASF



BASF's family of eProduct solutions

Electronic tools and products are changing the way today's businesses are run. BASF has combined its entire family of "eProducts" into an integrated system called **SmartTOOLS™**. The **SmartTOOLS** family consists of the **SmartTRAK®2** paint management software, **SmartCART™** and **SmartLINK™** inventory systems, **SmartSCAN®** spectrophotometer and **SmartCOLOR™** formula retrieval. BASF's primary goal is to make your business more profitable and more productive, and the **SmartTOOLS** family will help you achieve these objectives



SMART TRAK²

The heart of BASF eProducts technology

At the heart of BASF's new **SmartTOOLS™** family is **SmartTRAK®2**. This easy-to-use Windows® based software system provides you with a versatile "hub" at the center of your paint management operations. The **SmartTRAK2** software is made up of a number of modules that relate to several important aspects of your business.

One of the key functions of **SmartTRAK2** is providing fast and accurate color formulas and mixing instructions. BASF formula number, OEM color code, color name, competitor's code and **SmartSCAN** interface are just some of the ways you can track down the formula you're looking for.

SmartTRAK2 now has an "on-line search" capability that connects you to BASF's world wide ARCTIC database to provide you with the latest color formula information.

SmartTRAK2 software will interface with your SmartScale to ensure the ultimate in accurate mixing.



Two other main features of **SmartTRAK®2** are our new **SmartCART™** and **SmartLINK™** inventory software systems.

SmartCART is a barcode-based inventory control system. After scanning the barcode information, the **SmartCART** program will generate an order.

1. Scan Product



2. Generate Order



3. Upload Order



The **SmartLINK** software will then interface with any of the three Websites: BodyShopmall.com, ColorSource.com or PBEMall.com. Place your order on-line via any of these Websites. There is absolutely no faster or easier way to handle your ordering needs.

**order online** SMARTTRAK²**Additional productivity-enhancing modules****• Job Costing**

Track all paint, paint-related materials and non-paint items such as sandpaper and masking tape. This module will generate a "paint cost worksheet."

• VOC Tracking

Whether using an intelligent or conventional scale, all VOC usage is calculated.

Technical Data/MSDS

Have access to the most current technical data sheets and MSDS information.

• Reports

Automatically generate a variety of useful reports based on your paint usage.



The industry's most advanced spectrophotometer

This unique spectrophotometer can scan a painted surface and instantly give you a formula to precisely match that color. The power and precision of **SmartSCAN**® comes from its unique four-angle measuring capabilities. Even metallics are quickly and easily matched. Most paint fades over time, so only using the OEM color code may provide a color that doesn't quite match.

However, **SmartSCAN** reads the light wavelengths of the color on the car, then finds the color formula in the **SmartTRAK**®2 database that has the same wavelengths. In this way, **SmartSCAN** provides an exact formula to match the color actually on the vehicle.

So if you're looking for a solution to quickly match those difficult colors, **SmartSCAN** is the answer.



1. Scan Vehicle



2. Find Formula



OEM color information at your fingertips

We are now in an electronic age, and the new **SmartCOLOR™** Formula Lookup CD from BASF is a perfect “first-step” in finding an electronic color information solution.

With this software you are able to look up a color in a variety of ways, including OEM code, model, COLOR-MAX® number, and even by entering a competitor’s paint code. You can then use the software to print a label for your paint container. Also included on the CD are printable versions of the technical data sheets and MSDS information for all BASF Automotive Refinish Products.

SmartCOLOR is a great way to replace piles of old-fashioned microfiche with one convenient CD-ROM. To get your free **SmartCOLOR** CD-ROM, contact your local BASF representative.



COLOR-MAX²

Color matching made simple — and fast



The new **COLOR-MAX²** system from BASF is the next generation of the tool that revolutionized color matching. **COLOR-MAX²** is a visual reference tool that can cut color matching time by up to 75% over competitive systems. The **COLOR-MAX²** system now features more than 4,700 metallic-color chips—and a more concise “real-world” selection of solid colors. Each chip is sprayed with BASF refinish paint, not printed with colored inks, and is actually a spray-out of its formula.

When used in conjunction with **SmartTRAK²** and **SmartSCAN**, **COLOR-MAX²** becomes the most sophisticated color management system available in the industry. **COLOR-MAX²** makes color matching faster, easier and more accurate than ever.



AD2200 201101(H/H) Printed in the USA

BASF Corporation
Automotive Refinish
26701 Telegraph Rd.
Southfield, MI 48034

BASF Canada
345 Carlingview Drive
Toronto, Ontario, Canada
M9W 6N9

BASF Pinturas, S.A. de C.V.
Avenida 1 No. 9
Parque Industrial Cartagena
54900 Tultitlán, Edo. de México



Website Address: www.basftoolbox.com
Toll-Free Hotline: 1-800-825-3000

BASF